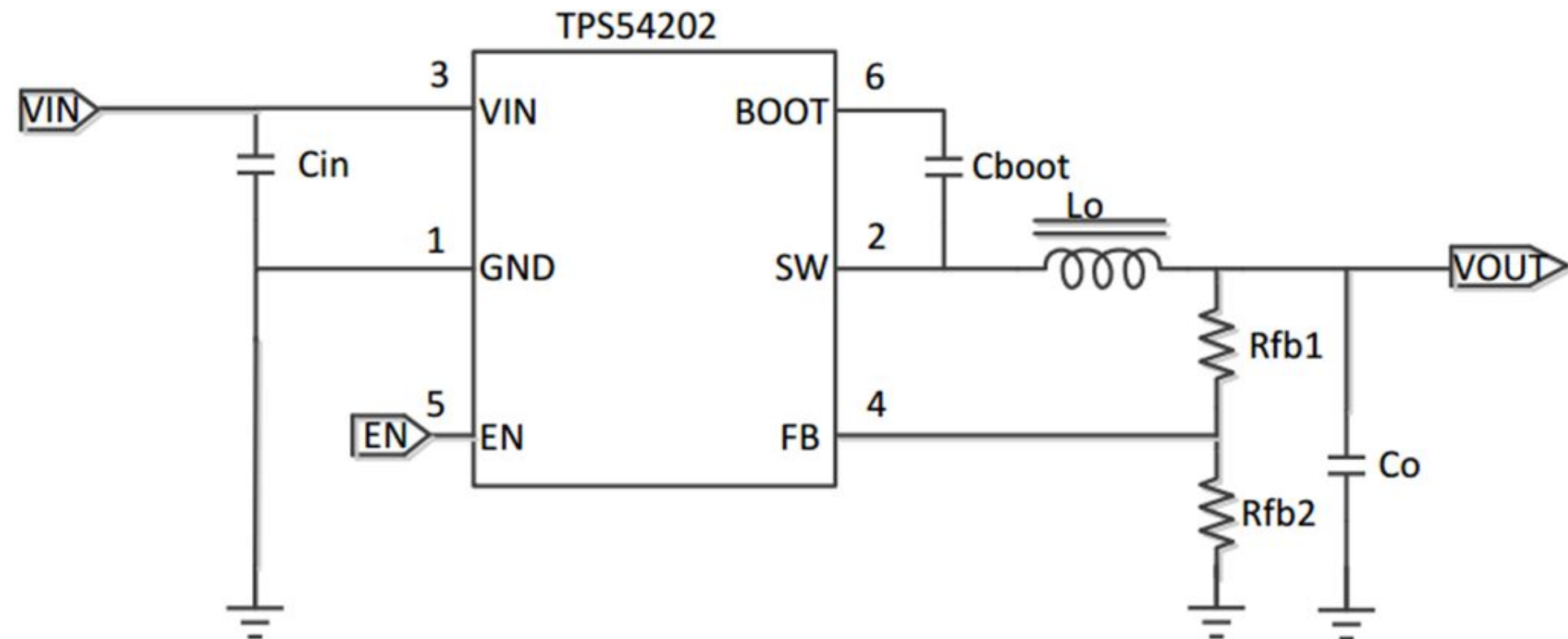



Revision History				
Rev	ECN #	Approved Date	Approved by	Notes
N/A	N/A	N/A	N/A	N/A



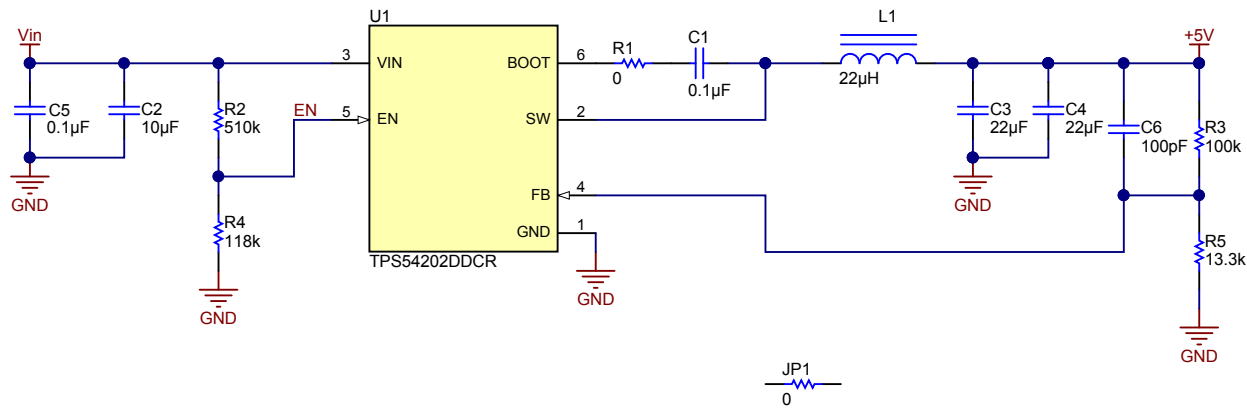
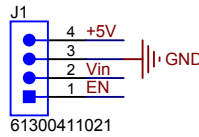
Texas Instruments and/or its licensors do not warrant the accuracy or completeness of this specification or any information contained therein. Texas Instruments and/or its licensors do not warrant that this design will meet the specifications, will be suitable for your application or fit for any particular purpose, or will operate in an implementation. Texas Instruments and/or its licensors do not warrant that the design is production worthy. You should completely validate and test your design implementation to confirm the system functionality for your application.

Orderable: N/A	Designed for: Public Release	Mod. Date: 6/17/2016	
TID #: TIDA-00948	Project Title: High Efficiency DCDC Module with TQ247 Form Factor		
Number: TIDA-00948	Rev: E1	Sheet Title:	
SVN Rev: Version control disabled	Assembly Variant: [No Variations]	Sheet: 1 of 3	
Drawn By:	File: CoverSheet_SchDoc	Size: B	
Engineer: Jason Tao	Contact: http://www.ti.com/support		http://www.ti.com © Texas Instruments 2016

NOTES:

INPUT VOLTAGE: 7-V to 20-VDC, 12-VDC IS RECOMMENDED
PEAK INPUT CURRENT: 1A

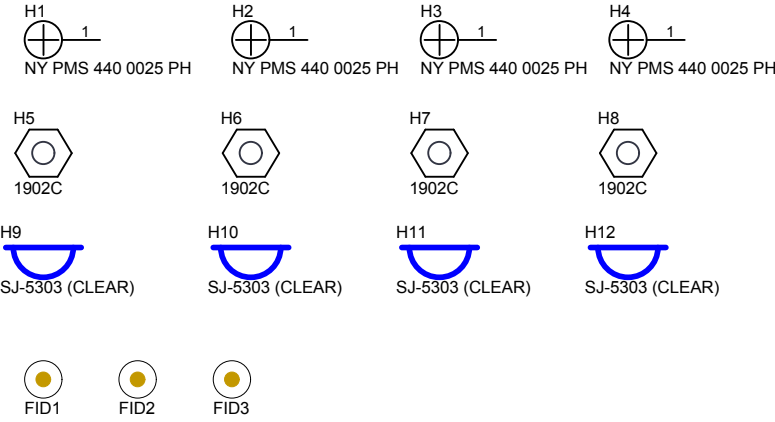
OUTPUT VOLTAGE: 5VDC Nominal
OUTPUT CURRENT: 1A Nominal
OCP THRESHOLD: 3A
OTP THRESHOLD: 160 degree



Texas Instruments and/or its licensors do not warrant the accuracy or completeness of this specification or any information contained therein. Texas Instruments and/or its licensors do not warrant that this design will meet the specifications, will be suitable for your application or fit for any particular purpose, or will operate in an implementation. Texas Instruments and/or its licensors do not warrant that the design is production worthy. You should completely validate and test your design implementation to confirm the system functionality for your application.

Orderable: N/A	Designed for: Public Release	Mod. Date: 6/15/2016
TID #: TIDA-00948	Project Title: High Efficiency DCDC Module with TO247 Form Factor	
Number: TIDA-00948	Rev: E1	Sheet: 2 of 3
SVN Rev: Version control disabled	Assembly Variant: [No Variations]	Size: B
Drawn By:	File: TIDA-00948 RevA01.SchDoc	http://www.ti.com
Engineer: Jason Tao	Contact: http://www.ti.com/support	© Texas Instruments 2016





PCB Number: TIDA-00948

PCB Rev: E1

Label Table	
Variant	Label Text
001	ChangeMe!
002	ChangeMe!

ZZ2
Assembly Note
These assemblies are ESD sensitive, ESD precautions shall be observed.

ZZ3
Assembly Note
These assemblies must be clean and free from flux and all contaminants. Use of no clean flux is not acceptable.

ZZ4
Assembly Note
These assemblies must comply with workmanship standards IPC-A-610 Class 2, unless otherwise specified.